

Institutional Summary Report

Institution: University of Georgia	Test Date: October 03, 2018	Number of Complete Tests: 2
Location: Athens, GA	Test Form: LY	Number of Incomplete Tests: 380
FICE Number: 001598		

Subject Scores

English**	Reading & Literature	Reading Critically			Reading Analytically			Understanding Literature			Writing	Writing as a Process			Conventions of Written English			** English and Writing Scores were calculated without Writing Exercise						
		H	M	L	H	M	L	H	M	L		H	M	L	H	M	L							
293 Median 59 S.D.	280 Median 66 S.D.	14	55	39	32	45	31	21	61	26	313 Median 45 S.D.	31	62	15	16	82	10							
		13 %	51 %	36 %	30 %	42 %	29 %	19 %	56 %	24 %		29 %	57 %	14 %	15 %	76 %	9 %							
Mathematics	General Mathematics	Practical Applications			Properties & Notations			Using Statistics			Algebra	Evaluating Expressions			Equations & Inequalities			Geometry	2- & 3-Dimensional Figures			Geometrical Calculations		
		H	M	L	H	M	L	H	M	L		H	M	L	H	M	L		H	M	L	H	M	L
336 Median 69 S.D.	353 Median 61 S.D.	51	38	6	49	42	4	46	38	11	340 Median 65 S.D.	40	43	12	35	49	11	314 Median 71 S.D.	27	48	20	23	52	20
		54 %	40 %	6 %	52 %	44 %	4 %	48 %	40 %	12 %		42 %	45 %	13 %	37 %	52 %	12 %		28 %	51 %	21 %	24 %	55 %	21 %
Science	Laboratory & Field Work	Observational/ Experimental Design			Laboratory/Field Techniques			Interpreting Results			Fundamental Concepts	Life Sciences			Physical Sciences									
		H	M	L	H	M	L	H	M	L		H	M	L	H	M	L							
333 Median 73 S.D.	329 Median 67 S.D.	30	41	20	42	40	9	35	47	9	335 Median 67 S.D.	37	38	16	41	38	12							
		33 %	45 %	22 %	46 %	44 %	10 %	38 %	52 %	10 %		41 %	42 %	18 %	45 %	42 %	13 %							
Social Studies	History	Significance of World Events			Significance of U.S. Events			Social Sciences	Geography			Political/Economic Structures			Social Science Procedures									
		H	M	L	H	M	L		H	M	L	H	M	L	H	M	L							
322 Median 57 S.D.	322 Median 54 S.D.	26	58	12	27	61	8	30	53	13	329 Median 53 S.D.	51	36	9	41	49	6							
		27 %	60 %	13 %	28 %	64 %	8 %	31 %	55 %	14 %		53 %	38 %	9 %	43 %	51 %	6 %							

Composite Score

188

Composite score represents the median of the individual student composite scores.

Competency Scores

Interpretive Reasoning

H	M	L
0	1	1
0 %	50 %	50 %

Strategic Reasoning

H	M	L
0	0	2
0 %	0 %	100 %

Adaptive Reasoning

H	M	L
0	0	2
0 %	0 %	100 %

Using Your College BASE Institutional Summary Report

This Institutional Summary Report presents aggregate scores for examinees who took *College BASE* and who indicated enrollment at your institution. The Assessment Resource Center assigned the "Test Date" to provide a unique identifier based on the actual testing date or a date proximate to the institution's testing period. This summary presents *College BASE* scores in two dimensions of achievement: Subject Scores in English, mathematics, science, and social studies; and Competency Scores in interpretive, strategic, and adaptive reasoning.

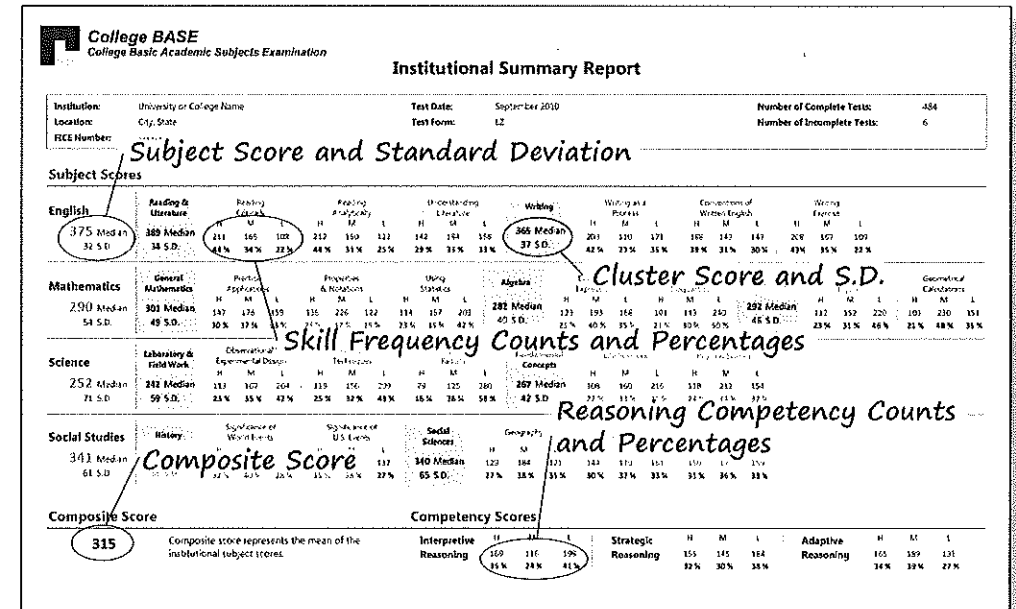
The Subject Scores indicate examinees' familiarity with traditional general education skills and knowledge. Subjects are divided into levels that become increasingly more specific: from Subjects to Clusters to Skills. This summary reports Subject and Cluster scores based on a 40 to 560 scale, with 300 being average. This summary displays the median score and standard deviation for each *College BASE* Subject and Cluster. Skill scores are reported as the numbers and percentages of students scoring high (H), medium (M), and low (L). Competency Scores show examinees' capability in cognitive processing skills as they apply to all Subjects. These scores are reported as High, Medium, or Low. This summary provides the numbers and corresponding percentages of examinees that achieved high, medium, and low ratings when each student has taken all four Subjects.

The Composite Score, representing institutional performance on the examination when all four subjects are administered, is also reported on a 40 to 560 scale. For Missouri institutions and *College Base 1:1* administrations the Composite Score represents the mean of the four institutional Subject Scores. The median of all individual student Composite Scores is reported for all other administrations. Please refer to your *Institutional Summary Report: Interpretive Guide* or our website at <http://arc.missouri.edu/CB> for additional information.

For questions on your score report or for more information on *College BASE*, please contact us at:

Assessment Resource Center
University of Missouri
2800 Maguire Blvd.
Columbia, MO 65211

Toll Free 1-800-366-8232
Office hours: 8:30 a.m. - 4:00 P.M. CST
Email address: collegebase@missouri.edu
Website: <http://arc.missouri.edu/CB>



University of Missouri
Assessment Resource Center

